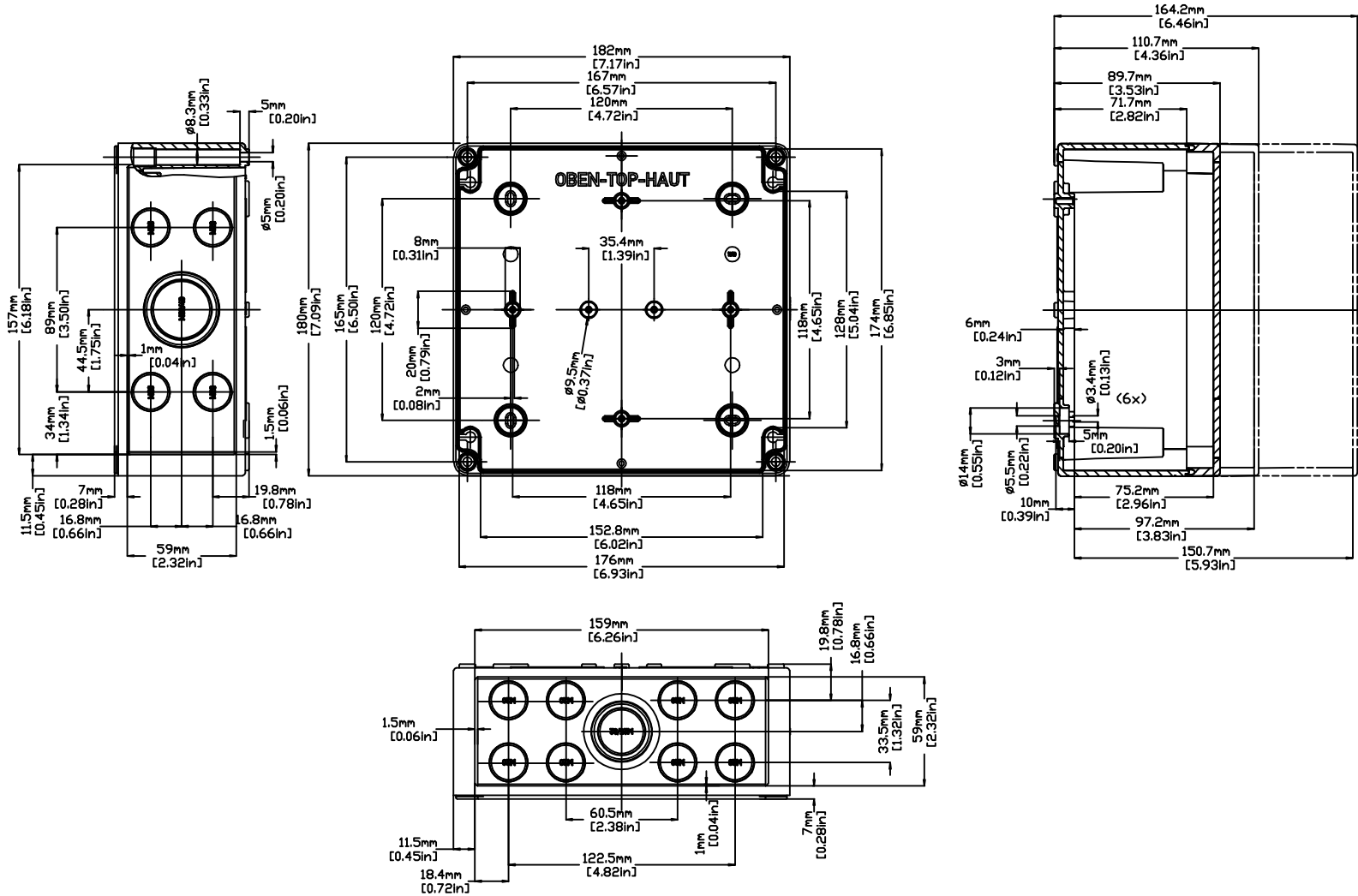


REVISIONS FOR DWG # 3EN-3IS-TK-TK1818

| REV | CH.NO. | DESCRIPTION | DATE | REVISED BY |
|-----|--------|-----------------|----------|------------|
| - | - | ORIGINAL DESIGN | 08/01/11 | ROLAND G |



UNLESS OTHERWISE SPECIFIED
 • ALL DIMENSIONS ARE IN MILLIMETERS
 • THIRD ANGLE PROJECTION

• TOLERANCE

| | | |
|-------|----|-------|
| XX | mm | XX mm |
| XX.X | mm | XX mm |
| XX.XX | mm | XX mm |
| ALL | mm | XX mm |

This Drawing is the property of

Altrech Corp.

35 Royal Road
 Flemington NJ 08822-6000
 (908) 806-9400 • Fax (908) 806-9490

AND IS A CONFIDENTIAL DISCLOSURE LENT WITHOUT CONSIDERATION OTHER THAN THE BORROWER'S AGREEMENT THAT IT SHALL NOT BE REPRODUCED, COPIED, LENT, OR DISPOSED OF DIRECTLY OR INDIRECTLY NOR USED FOR ANY PURPOSE OTHER THAN THAT FOR WHICH IT IS SPECIFICALLY FURNISHED.

TITLE: POLYSTYRENE/ POLYCARBONATE ENCLOSURE
 TK 1818

| | | | | | |
|-------------------------------|------------|--------------|-------------------|--------|---------|
| DRAWN BY: ROLAND GYORGYPAL | 08/01/2011 | DRAWING NO.: | 3EN-3IS-TK-TK1818 | REV.: | - |
| CHECKED BY: JEFF ROYE | 08/01/2011 | SCALE: | - | SHEET: | 1 OF: 1 |
| RELEASED BY: LASZLO G. | 08/01/2011 | | | | |