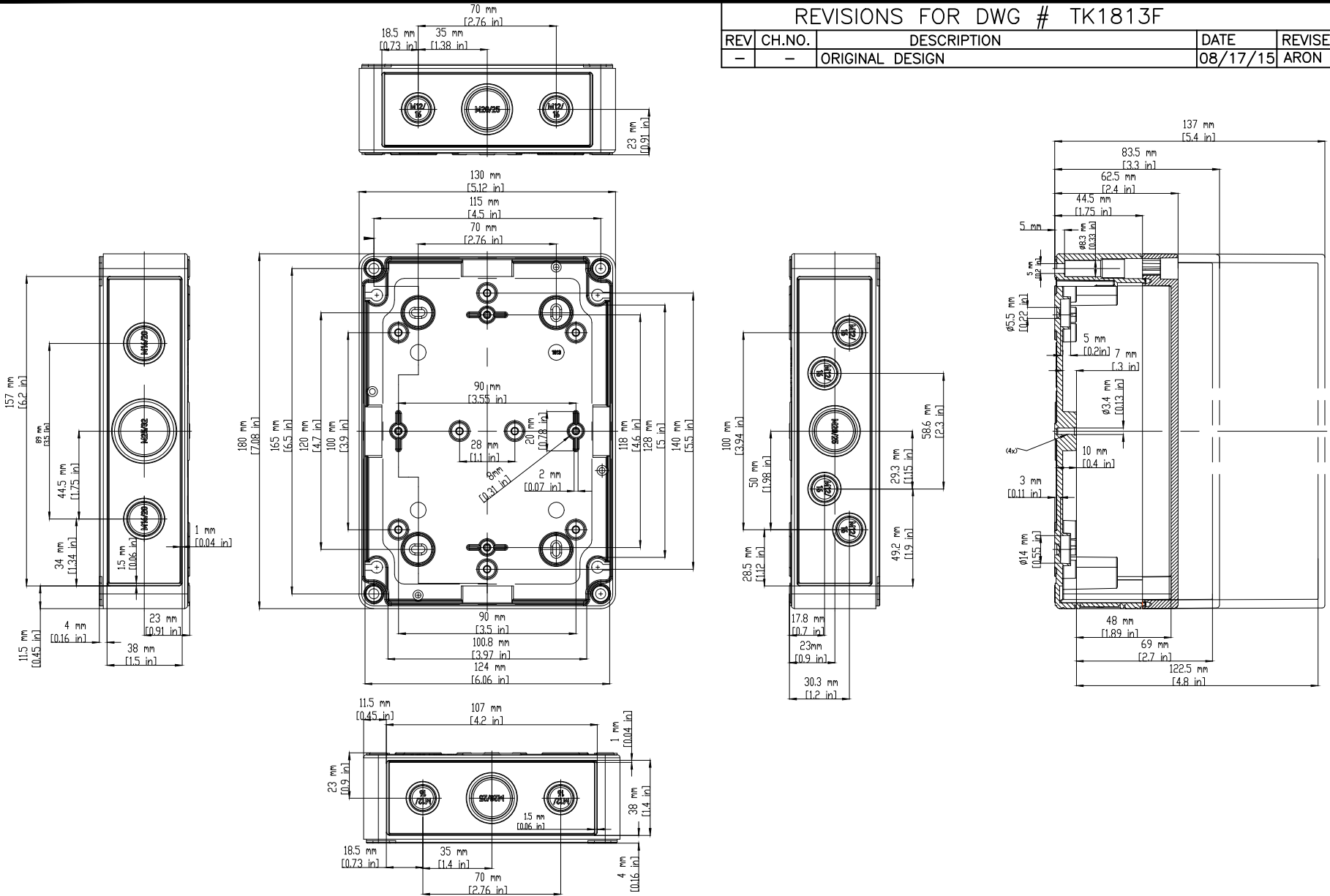


REVISIONS FOR DWG # TK1813F

REV	CH.NO.	DESCRIPTION	DATE	REVISED BY
-	-	ORIGINAL DESIGN	08/17/15	ARON G



UNLESS OTHERWISE SPECIFIED

- ALL DIMENSIONS ARE IN MILLIMETERS
- THIRD ANGLE PROJECTION

• TOLERANCE			
XX	ID	1.00 mm	
XX.X		0.50 mm	
XX.XX		0.20 mm	
ALL	ID	XX mm	

This Drawing is the property of
Altech Corp.[®]
 35 Royal Road
 Flemington NJ 08822-6000
 (908) 806-9400 • Fax (908) 806-9490

AND IS A CONFIDENTIAL DISCLOSURE LENT WITHOUT CONSIDERATION OTHER THAN THE BORROWER'S AGREEMENT THAT IT SHALL NOT BE REPRODUCED, COPIED, LENT, OR DISPOSED OF DIRECTLY OR INDIRECTLY NOR USED FOR ANY PURPOSE OTHER THAN THAT FOR WHICH IT IS SPECIFICALLY FURNISHED.

TITLE: POLYSTYRENE / POLYCARBONATE ENCLOSURE TK1813F			
DRAWN BY: ARON GYORGYAL	08/17/15	DRAWING NO.:	3EN-3IS-TK-TK1813F
CHECKED BY: JEFF ROYE	08/17/15	SCALE:	-
RELEASED BY: LASZLO G	08/17/15	SHEET:	1 OF 1
REV.:	-		